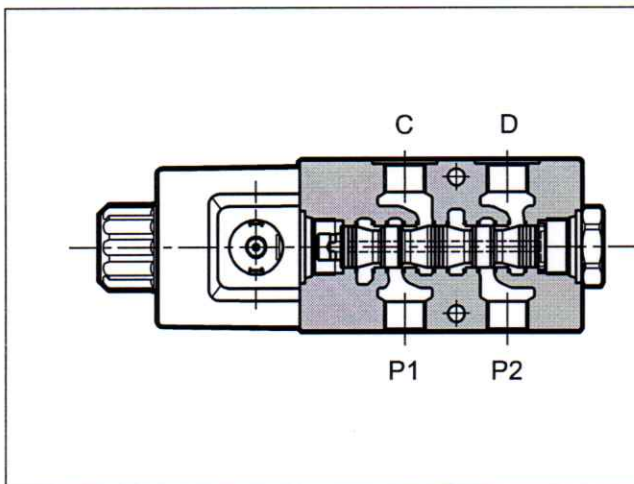




**p** max 320 bar  
**Q** max 90 l/min

#### OPERATING PRINCIPLE



- The BFD\* modular solenoid valve is a six-port flow diverter that allows the simultaneous connection of two of the four working lines, switching between them by solenoid actuation.
- They are available in two sizes, depending on the flowrate, and they are used mainly for compact applications in mobile sector.
- Up to 5 diverters can be fastened together in stacked assemblies, working in series.
- The external drain is available as option on both sizes.
- The standard valve BFD06 is suitable to ensure a salt spray resistance up to 240 hours. To reach 600 hours of resistance WK\* type coils with zinc-nickel treatment are needed.
- The standard valve BFD10 is suitable to ensure a salt spray resistance up to 600 hours.

#### PERFORMANCES

(obtained with mineral oil with viscosity of 36 cSt at 50°C)

|                               |   | BFD06     | BFD10 |
|-------------------------------|---|-----------|-------|
| Maximum operating pressure:   |   | 250       | 250   |
|                               | - with drain Y                            | 320       | 320   |
|                               | - with drain Y1                           | 80        | -     |
| Maximum flow                  | l/min                                     | 60        | 90    |
| Pressure drops $\Delta p - Q$ | see point 3                               |           |       |
| Electrical features           | see point 6                               |           |       |
| Operating limits              | see point 4                               |           |       |
| Electrical connections        | see point 11                              |           |       |
| Ambient temperature range     | °C  | -20 / +50 |       |
| Fluid temperature range       | °C  | -20 / +80 |       |
| Fluid viscosity range         | cSt                                       | 10 + 400  |       |
| Fluid contamination degree    | according to ISO 4406:1999 class 20/18/15 |           |       |
| Recommended viscosity         | cSt                                       | 25        |       |
| Mass                          | kg  | 3         | 3.5   |
| Surface treatment             | zinc-nickel                               |           |       |

#### HYDRAULIC SYMBOL

